

VLUV STOV is the first inflatable seating ball covered by upholstery fabric. It is made for upright, healthy seating.

The VLUV STOV integrates into most design homes and work spaces.

VLUV®



VLUV STOV. THE COLORS.



SBV-002.65/75 CKI
PEBBLE



SBV-002.65/75 CMA
MACCHIATO



SBV-002.65/75 CAN
ANTHRACITE



SBV-002.65/75 CGR
GREIGE



SBV-002.65/75 CPE
PETROL



SBV-002.65/75 CCO
CONCRETE

SPECIFICATION

Durable rugged polyester fabric

Thickness ca. 535g/sqm

Rubbing fastness over 50.000 (Martindale)

Includes phtalates-free, burst resistant inner PVC ball

Comfy handle for easy transport

Design patented bottom ring prevents rolling away

2 sizes: 60-65cm (23.6-25.6in) and 70-75cm (27.5-29.5in)

VLUV 65 = 155cm (5'1")-175cm (5'9") body height

VLUV 75 = 175cm (5'9")-195cm (6'5") body height

YKK heavy-duty zipper

Stain resistant and washable

Maximum load capacity: 120kg (265lb)

Total weight: ca. 2kg

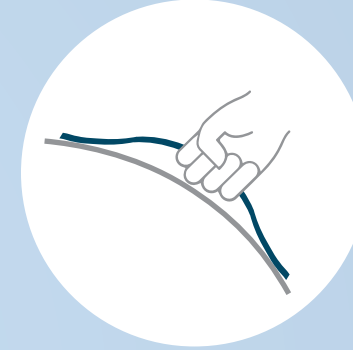
VLUV[®]

KEY FEATURES



fixFORM

Design-patented handle for easy and safe transport



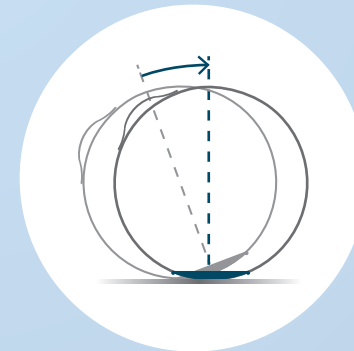
gripME

Improved upright seating position compared to a PVC ball



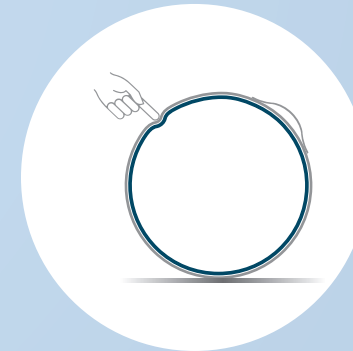
duoTHREAD

double felled seam for highest durability and safety



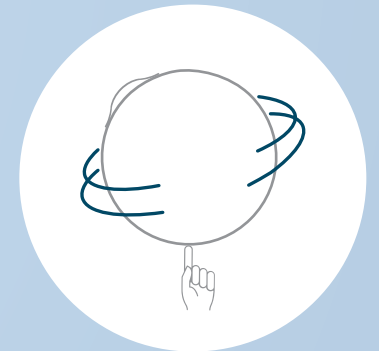
unROLL

Bottom ring prevents ball from rolling away too easily



extraSAFETY

Double layer prevents size expansion and bursting



lightWEIGHT

Only 2kg weight - easy to transport